



# TRUST

A Publication of The North Haven Land Trust, Inc.

**SPECIAL POINTS OF INTEREST:**

- **Annual Meeting,  
Tuesday  
May 15, 2012**  
Business Meeting 6:00 pm  
Program 6:30 pm
- **Election of Officers**
- **Property Highlight**

**INSIDE THIS ISSUE:**

Papa Property	1
Upcoming Annual Meeting	1
CT Land Conservation Council	2
Website Resources	2
Land Trust Membership	3
Photos from 2011 Meeting	3
Membership Application	3

**P A P A   P R O P E R T Y**

Located adjacent to the southbound entrance to Interstate 91 at Washington Avenue (Exit 12) is a 1.2 acre parcel of land that has been under the care of the North Haven Land Trust since receiving it as a gift from Nicholas Papa in 1983. This is perhaps one of the most visible properties that have been entrusted to the Land Trust, at the southern end of the Holiday Inn.



**An every day view of the Papa Property**

Although this property does not have some of the more desirable features that would attract birds or other wildlife, it serves some important benefits to the area. While it provides a natural buffer between highway traffic and the commercial properties, it also provides a buffer zone for the New York, New Haven and Hartford Railroad line to its west. Because of its apparent visibility to so many residents using Washington Avenue and

the entrance to I-91, the property also serves as a reminder of the presence of the Land Trust and for the North Haven

community to take responsibility to be good stewards of all the land that has been set aside for the benefit of all.

## ANNUAL MEETING MAY 15, 2012

The Annual Meeting of the North Haven Land Trust will take place on Tuesday, May 15, 2012 at 6:30 pm at the North Haven Middle School Cafeteria.

Following a brief business meeting there will be an educational program featuring

visitors from *The Children's Museum* in West Hartford. There will be an assortment of reptiles and amphibians, mostly animals that are either threatened or endangered species.

The educational programs are always a popular event

especially for our children. While the primary purpose is education, they are also an entertaining experience when we have unusual visitors. This year's program promises to be another such experience. Please join us for another entertaining and fun night.

## CT LAND CONSERVATION COUNCIL VISIT

At the April meeting of the board of the Land Trust, we had a visit from Amy Paterson, Executive Director of the CT Land Conservation Council.

Ms. Paterson discussed the role of the CLCC as a support service for the over 135 Land Trusts throughout Connecticut. The CLCC holds an annual conference offering many training sessions on various topics of interest related to land conservation. This conference serves as

a valuable resource for land trusts throughout the state.

Through its lobbying efforts the CLCC serves as a voice in the state legislature on issues related to preservation of open space and conservation. The CLCC has been successful in securing commitments from the state on over \$300 million for land conservation funding through various grant programs over the past decade.



Amy Paterson, left, of the CT Land Conservation Council and Heidi Boettger, President of the North Haven Land Trust.

## RESOURCES ON OUR WEBSITE

Are you looking for information related to land conservation, wildlife in CT, hiking trails, native shrubs or invasive plants? The Land Trust has made several publications available at the North Haven Memorial Library. For a complete listing of available publications, check the [Education Links](#) on the Land Trust's website.

Are you interested in knowing what's happening at neighboring land trusts? Our [Education Links](#) provides access to several of our neighbors' websites, as well as links to Peter's Rock Association and the North Haven Trail Association.

There are also links to some state and national organizations devoted to land conservation.

The CT Land Conservation Council link was just recently added.

Check out all of these resources available on our website.

The website may conveniently be found at:  
[www.northhavenlandtrust.org](http://www.northhavenlandtrust.org).

## DONATIONS OF LAND

The North Haven Land Trust is always interested in obtaining land to preserve as protected space for the enjoyment of all residents of North Haven. If you have land that you are willing to donate, please contact any board member. The Land Trust will be happy to discuss

with you the process and options available for accepting donations. These could include outright gifts of land or a conservation easement. Your gift will become a perpetual gift to all the residents of our town for generations to follow.



## NEW BOARD MEMBER

Please welcome new board member Gail D'Addio who joins the board at the April meeting.

Gail is a Certified Public Accountant who has been in public practice since 1980. She and her husband Michael D'Addio have lived in North Haven for the past 25 years.

LAND TRUST MEMBERSHIP

PHOTOS FROM 2011 ANNUAL MEETING

April is the time of year when we ask members to consider renewing their annual membership. In these fiscally challenging times there is no greater need than now to take a look at our financial picture and to see what your annual dues are used for.

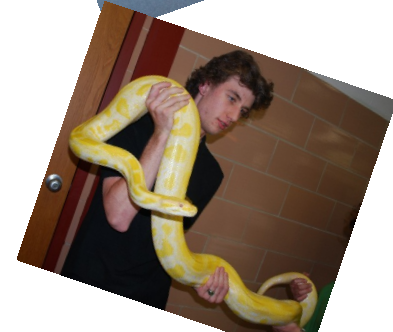
Perhaps the largest cost that we incur is our annual insurance that generally amounts to nearly \$2,000. Each year at our annual meeting (see related article) we plan an educational program during which we have guest presenters and some interesting animals. We must pay for some property management such as brush clearing, tree removal and other maintenance. We also have administrative costs such as the printing and mailing of this newsletter and other correspondence.

For many years our investments

yielded sufficient interest income, which when combined with your annual membership fees was adequate to meet all these obligations.

As we are sure you have experienced as well, we find our interest rates declining in recent years and along with it, our interest income. Our expenses have remained fairly constant, but we must make up the difference through membership fees.

Please take the time now to renew your membership and, equally important, please tell your neighbors and friends to consider joining as well. New members will help to provide the needed financial support. Please share this newsletter with others, or let us know someone to whom we can send a newsletter.



NORTH HAVEN LAND TRUST



- Student (under 18 years) . . . . \$ 2.00
Individual . . . . . \$ 15.00
Family . . . . . \$ 20.00
Life . . . . . \$ 200.00

- I am enclosing an additional contribution for land acquisition. \$ \_\_\_\_\_
I am enclosing an additional contribution to defray operating costs. \$ \_\_\_\_\_
I would like to volunteer my time to help the Trust. Please call me.

NAME PHONE
STREET TOWN
STATE ZIP CODE DATE

Mail application and check to: NORTH HAVEN LAND TRUST, P. O. Box 262, North Haven, CT 06473

Please use this form to make payment of your 2012 dues. Dues and contributions are tax deductible.

FIND US ON THE WEB:  
[WWW.NORTHHAVENLANDTRUST.ORG](http://WWW.NORTHHAVENLANDTRUST.ORG)



**THE NORTH HAVEN  
LAND TRUST, INC.**

P. O.Box 262  
North Haven, CT 06473

E-mail: [landtrust@northhavenlandtrust.org](mailto:landtrust@northhavenlandtrust.org)

**Preserving open space for the benefit of  
the community.**

The North Haven Land Trust is a non-profit corporation dedicated to acquiring and preserving open space in our town. The NHLT accepts donations of land, conservation easements or money to purchase land.

The more than 125 land trusts in Connecticut have acquired and preserved more than 22,000 acres of land. Through the Connecticut Land Conservation Council the NHLT works closely with The Nature Conservancy and other environmental organizations. It is independent of town government but cooperates with the North Haven Conservation Commission and town officials to achieve common goals. The Board of Directors, officers and members are your neighbors who have joined together to save some of our streams, ponds, woodlands and marshes.

NORTH HAVEN LAND TRUST  
P. O. BOX 262 . NORTH HAVEN, CT 06473