



TRUST

A Publication of The North Haven Land Trust, Inc.

SPECIAL POINTS OF INTEREST:

- **Annual Meeting, Wednesday
May 7, 2014**
Program 6:30 pm
Business Meeting to follow
- **Election of Officers**
- **Property Highlight**

H U M P H R E Y P R O P E R T Y

If you happen to be out kayaking on the Quinnipiac River, just south of the railroad trestle on Stiles Lane is the site of the former Humphrey Chemical Company. The land was gifted to the Land Trust in 1974. Unfortunately, about the only way to see the property is by kayak. The land adjoins the former Upjohn site, now owned by Pfizer. As you travel south on the Route 40 connector you may see plenty of activity on the Pfizer property where there is ongoing remediation activity to clean the site for potential future use.



Humphrey Property as seen from Quinnipiac River

In October of this past year, the Land Trust agreed to an access easement allowing Pfizer temporary access to the Humphrey Property to

assist in their remediation efforts. The Land Trust also granted a conservation easement to the Town of North

Haven, assuring that no development will take place on our property.

INSIDE THIS ISSUE:

Humphrey Property	1
Upcoming Annual Meeting	1
One Town, One Book	2
Website Resources	2
Land Trust Membership	3
Photos from 2013 Meeting	3
Membership Application	3

ANNUAL MEETING MAY 7, 2014

The North Haven Land Trust invites you to join us for a South American Adventure. Following the business portion of our Annual Meeting, guests from Animal Embassy of Stamford will present a program including a variety of visitors from South America. This is

your chance to meet South American Animal Ambassadors such as a Spectacled owl, a Red-foot tortoise, a Red-eyed tree frog, chinchillas, and a Boa constrictor.

The South American Adventure will take place on Wednesday, May 7, 2014 at 6:30 pm at the

Clintonville Elementary School. The business meeting will follow at the conclusion of the program.

ONE TOWN, ONE BOOK

The North Haven Library and the North Haven Public Schools have scheduled a program, One Town, One Book for the entire month of May. The Land Trust is happy to join in this program with the theme of this year's Annual Meeting focusing on South American animals. South America is the origin of chocolate and continues to be a major source of cacao beans necessary in the production of chocolate.

The Town-wide program celebrates the 50th anniversary of the publication of the book "Charlie and the Chocolate Factory" by Roald Dahl.

The program is intended to reach everyone in the town with kid focused, adult friendly and intergenerational activities planned throughout the month at varying locations.

The Land Trust is proud to join

the many other sponsors for this program.

A full schedule of the program's events can be found on the North Haven Memorial Library's website:

www.northhavenlibrary.net



Board Members Claudia Giulietti and Pat Buonpane
at Earth Day Celebration on April 5

EARTH DAY CELEBRATION 2014

The Land Trust joined many other organizations, vendors and school groups at the annual celebration of Earth Day on April 5th at the Middle School. Pictured below are board members with our informational display.

DONATIONS OF LAND

The North Haven Land Trust is always interested in obtaining land to preserve as protected space for the enjoyment of all residents of North Haven. If you have land that you are willing to donate, please contact any board member. The Land Trust will be happy to discuss with you the process and

options available for accepting donations. These could include outright gifts of land or a conservation easement. Your gift will become a perpetual gift to all the residents of our town for generations to follow and may create estate and tax advantages.

RESOURCES ON OUR WEBSITE

Are you interested in knowing what's happening at neighboring land trusts? The [Education Links](#) on our website provides access to several of our neighbors' websites, as well as links to Peter's Rock Association and the North Haven Trail Association. There are also links to some state and national organizations devoted to land conservation. Check them out on our website:

www.northhavenlandtrust.org.

LAND TRUST MEMBERSHIP

PHOTOS FROM 2013 ANNUAL MEETING

April is the time of year when we ask members to consider renewing their annual membership. In these fiscally challenging times there is no greater need than now to take a look at our financial picture and to see what your annual dues are used for.

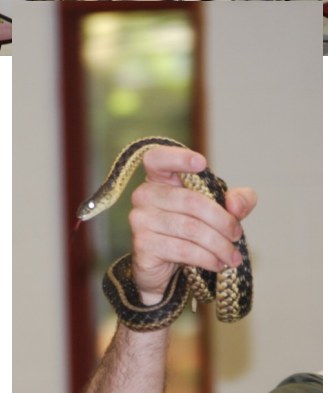
Perhaps the largest cost that we incur is our annual insurance that generally amounts to nearly \$2,000. Each year at our annual meeting (see related article) we plan an educational program during which we have guest presenters and some interesting animals. We must pay for some property management such as brush clearing, tree removal and other maintenance. We also have administrative costs such as the printing and mailing of this newsletter and other correspondence.

For many years our investments

yielded sufficient interest income, which when combined with your annual membership fees was adequate to meet all these obligations.

As we are sure you have experienced as well, we find our interest rates declining in recent years and along with it, our interest income. Our expenses have remained fairly constant, but we must make up the difference through membership fees.

Please take the time now to renew your membership and, equally important, please tell your neighbors and friends to consider joining as well. New members will help to provide the needed financial support. Please share this newsletter with others, or let us know someone to whom we can send a newsletter.



NORTH HAVEN LAND TRUST



- Student (under 18 years) \$ 2.00
Individual \$ 15.00
Family \$ 20.00
Life \$ 200.00
I am enclosing an additional contribution for land acquisition. \$
I am enclosing an additional contribution to defray operating costs. \$
I would like to volunteer my time to help the Trust. Please call me.

NAME PHONE
STREET TOWN
STATE ZIP CODE DATE

Mail application and check to: NORTH HAVEN LAND TRUST, P. O. Box 262, North Haven, CT 06473
Please use this form to make payment of your 2014 dues. Dues and contributions are tax deductible.

FIND US ON THE WEB:
WWW.NORTHHAVENLANDTRUST.ORG



**THE NORTH HAVEN
LAND TRUST, INC.**

P. O.Box 262
North Haven, CT 06473

E-mail: landtrust@northhavenlandtrust.org

**Preserving open space for the benefit of
the community.**

Board of Directors of the North Haven Land Trust

Heidi Boettger, President

Mark Cofrancesco, Vice-President

Pat Buonpane, Secretary

John Tibor, Treasurer

Kim Carew

Gail D'Addio

Claudia Giulietti

Jim Giulietti

Phil James

Sandy Stetson

Cathy Vegliante

Joe Vegliante

NORTH HAVEN LAND TRUST
P. O. BOX 262 . NORTH HAVEN, CT 06473